



Matching Green, Harlow, CM17

BUTLER & STAG



Guide Price £500,000-£550,000.
Residing on the edge of the green in the picturesque village of Matching Green, Yew Tree Cottage is a stunning two bedroom detached bungalow offering a turn key opportunity for its next owners.



Freehold

- Positioned In The Heart Of Matching Green
- Open Plan Living With Exposed Beams & Vaulted Ceilings
- Private West Facing Rear Garden
- Charming Detached Two Bedroom Bungalow
- Wet Underfloor Heating System Throughout
- 992 Sq. Ft Of Accommodation Space

Upon approaching the property, a shingle stoned driveway allows parking for up to two vehicles whilst offering the upmost privacy with a row of planted conifer trees screening the remainder of the front garden. Internally, the fully open plan living space is striking to the eye from entrance, with exposed beams running throughout the main living space alongside a sympathetically extended reception area with a vaulted ceiling. The Kitchen area beholds a range of integrated appliances and a detached island with electric hob which also holds ample space for food prep. The master bedroom offers views into the rear garden as well as a set of french doors to all direct access to the outside space. A second bedroom accompanied by a stunning three piece bathroom suite.

Externally, the westerly facing rear garden offers complete privacy whilst operating as a glorious suntrap. Another set of french doors lead out from the living space onto a decked area allowing space for entertaining and al-fresco dining, with the rest of the garden laid to lawn. and bordered by mature shrubs. Of particular note is a second outside space which resides beyond the extended part of the reception area, perfect for morning coffee/breakfast.

Matching Green is a highly sought-after village with a popular restaurant/public house (The Chequers) and is a short drive from the M11 junction 7 which leads to the M25. There is also a primary school and active church. More day-to-day facilities can be found at the nearby village of Hatfield Heath.

Chain Free

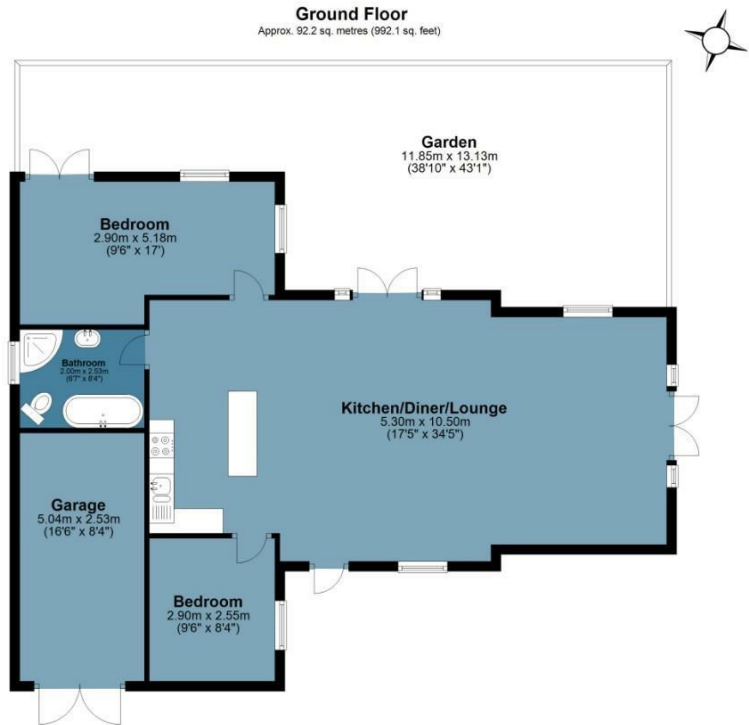




Yew Tree Cottage

Approx. Gross Internal Area 92.2Sq M (992.1 Sq Ft)

BUTLER & STAG



Measurements are approximate and for illustration purposes only. While we do not doubt the accuracy and completeness, we advise you conduct a careful independent assessment of the property to determine monetary value.

© @modephoto.uk www.modephoto.co.uk

BUTLER & STAG

☎ 01992 667666

🏠 4 Forest Drive, Theydon Bois, Essex, CM16 7EY

✉ theydon@butlerandstag.com

www.butlerandstag.uk

IMPORTANT NOTICE - These particulars have been prepared in good faith and they are not intended to constitute part of an offer or contract. We have not performed a structural survey on this property and the services, appliances and specific fittings have not been tested. All photographs, measurements, floor plans and distances referred to are given as a guide and should not be relied upon.